

DISCOVER

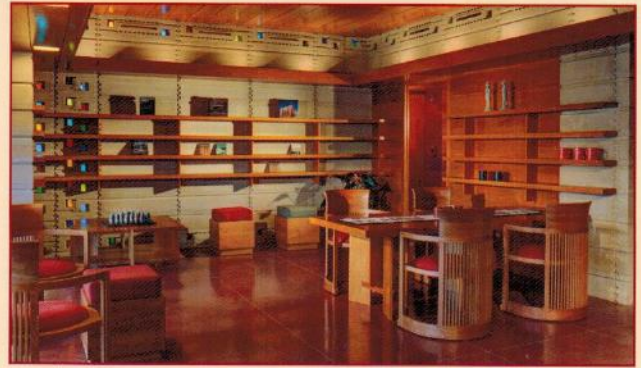
the largest collection of
FRANK LLOYD WRIGHT®
architecture in the world



A TRUE AMERICAN TREASURE

Explore the genius of America's greatest architect through his most fully articulated vision: the campus of Florida Southern College in Lakeland, Florida. Home to thirteen remarkable Wright structures, the campus features the newly built Usonian House, the stunning Water Dome, and Wright's only planetarium and theater-in-the-round.

 FLORIDA SOUTHERN COLLEGE®



The Usonian House, based on a design by Frank Lloyd Wright

FRANK LLOYD WRIGHT®

SHARP FAMILY TOURISM AND EDUCATION CENTER

featuring the GEICO Gift Shop

General Operating Hours

Daily 9:30 AM – 4:30 PM

Guided Tours

Usonian House Tour

(Discount for Polk County residents)

Basic Tour

In-Depth Tour

Behind-The-Scenes

Self-Guided Audio Tour

Special pricing available for seniors,
AAA members, active military, and large groups.

Information and reservations for guided tours:
863.680.4597

Florida Southern College
Sharp Family Tourism and Education Center
750 Frank Lloyd Wright Way
(formerly McDonald Street)
Lakeland, Florida 33801-5698
www.flsouthern.edu/flw-visitors.aspx

**FRANK
LLOYD
WRIGHT®**
HISTORIC SITE

*"Frank Lloyd Wright" and "Frank Lloyd Wright Historic Site",
are trademarks of the Frank Lloyd Wright Foundation and used with permission.*