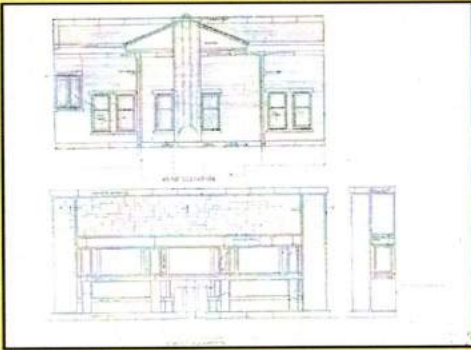


Opened in 1906, the First National Bank of Dwight was Frank Lloyd Wright's answer in design to demonstrate the solidness of a small town bank. The First National Bank Building uses its mass to convey a feeling of solidity and permanence, comforting feelings to the bank's customers.



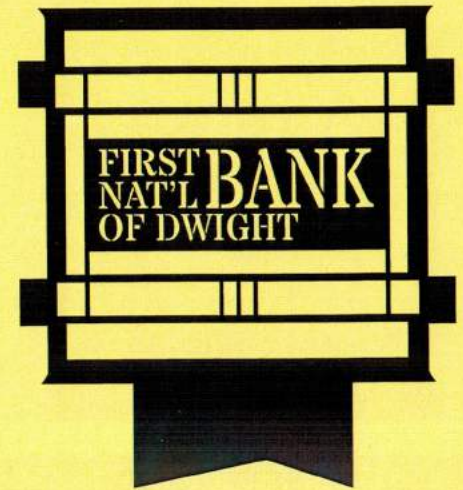
Original Elevation

The building still conveys those same feelings as it did in 1906 when the Dwight Star and Herald featured an article predicting a "splendid future for this solid financial institution," but it wasn't until the final sentence of the article that the name of the architect was given. "Frank Lloyd Wright," the article read, "of Chicago and Oak Park, is the architect of the building and the designer of the fixtures and furniture, and by his work he has demonstrated his ability as a master architect who can do things that are not only original but are also beautiful and practical."

ARCHITECTURE IS THAT GREAT
LIVING CREATIVE SPIRIT WHICH
FROM GENERATION TO GENERATION,
FROM AGE TO AGE,
PROCEEDS, PERSISTS, CREATES,
ACCORDING TO THE NATURE OF MAN,
AND HIS CIRCUMSTANCES
AS THEY CHANGE.
THAT IS ARCHITECTURE.

FRANK LLOYD WRIGHT
1937

First National Bank of Dwight
122 W. Main Street, P.O. Box 10
Dwight, Illinois 60420
(815) 584-1212
www.FNBofDwight.com
Member FDIC



First National Bank of Dwight
Dwight, Illinois

FRANK
LLOYD
WRIGHT

Architect





Front Facade

constructed of Bedford Limestone, practically unchanged since it was built

In the First National Bank of Dwight, Wright created a structure that stands as an example of functional planning and has remained virtually unchanged. Initially designed to house two separate businesses, a real estate office and the bank, it was remodeled in the 50's to keep abreast with modern banking conditions and the growth of the institution. The major change was the lowering of the beamed skylight ceiling in order to install air conditioning. The oak trim was removed and much of the interior limestone was covered.

In the 1960's the present owners remodeled again to restore the building's original character. The dividing partition



Lobby

expanded into former real estate office and restored using Wright's original plans



WRIGHT BASED
EVERY DETAIL IN
THE BUILDING ON
THE STRENGTH AND
SIMPLICITY OF THE
SQUARE, THERE ARE
NO CURVED ELEMENTS
USED, EVEN IN
HIS FURNITURE



Fireplace

the only element to use Roman brick in the entire building

was removed to allow the bank to occupy the entire space. The original plans were used to replace the oak trim and to recreate the skylight which is now lit through electrical means. Wright believed there was a natural, honest truth to a building's materials—the exposed brickwork, the natural strength of oak and even the exposed pillars revealing the building's structure. As a molder of form and space, Wright experienced the relationship between architecture and surrounding nature as perhaps no other architect in history, so that his buildings seem to literally grow out of their environments.